

Study of Cash Crop Production In Dhule District

Ramesh Punaji Chavan

Department of Geography, S S V P S Arts, Comm. And Science College Shindkheda Dist Dhule , Maharashtra,
India

ABSTRACT

The paper deals with the study of two cash crops that is cotton and sugarcane from Dhule district. In the present study data of cash crops production and area under cultivation for the ten years is taken in to consideration .The secondary data for the study is collected from department of agriculture of Dhule district and different websites and libraries.

Keywords : Cotton, Sugarcane, Dhule, District, Cash Crop

I. INTRODUCTION

Agriculture plays an essential role in the economic development of less developed country like India. Besides providing food to nation, agriculture release labour, provides saving , contributes to market of industrial goods and earns foreign exchange (Amarnath Tripathi, A.R. Prasad 2009). Maharashtra is considered as one of the progressive states in the country.The state has achieved the massive development in the field of agriculture particularly after the green revolution (Sharmishtha Balwan ,Abhijit Kurve). Due to unavailability of required water for agricultural activities Indian agriculture faces low productivity problem.(Dr. Sanjeeva Ryudu, T. C., Dr. krishnaiah Y. V. 2011).Cash crops are those crops which are grown for sale in the market either in raw form or in the proceed form. Thus cash crops have special characteristic of earning cash for farmer (D.R.Khullar 2012).

Study Area:-

Dhule district is a district of Maharashtra state in western region of India .Dhule city is the administrative headquarters of the districts. In this

district occurs tribal population. It is the part of historical region of Khandesh.It's extends 20 degree 38 minute North latitude to 21 degree 61 minute North latitude and 73 degree 50 minute East longitude to 75 degree 11 minute East longitude . Total area of the district is 8063 sq km (3113 sq mile). The district has four tahsil like as Dhule , Shirpur, shindkheda and sakri.This district bounded by Gujarat state ,Madhyapradesh state ,Nandurbar district ,Jalgaon district and Nasik district .

Objectives of the Study:-

- 1) To compare the cash crop production during the year 2006-07 to 2015-16 .
- 2) To study the fluctuation of cash crop production in different years .
- 3) Analysis of cash crop production in Dhule district.

Methodology:-

The study is entirely based upon secondary data. Data regarding the Dhule district area and production of cash crops is taken from Department of Agriculture. Data includes yearwise production and cultivation of cotton and sugarcane crop, area in hectare .Data and charts were prepared by author on the basis of

information available from secondary source and different websites and libraries. Various simple statistical techniques like as calculate average.

Result and discussion:-

Compared to the cultivation area of sugarcane and cotton it seems that the sugarcane regions fluctuate appears large scales. The cotton cultivation area does not show much fluctuation in ten years. Only a slight downward trend on 2008-09 and 2015-16. The cotton cultivation areas seems to have increase in the remaining years. When compared production, it seems that there is a large fluctuation in the production of both crops.

Dhule district cultivation area and production of cash crops (A-Area in hectare, P-Production in Million Tones)

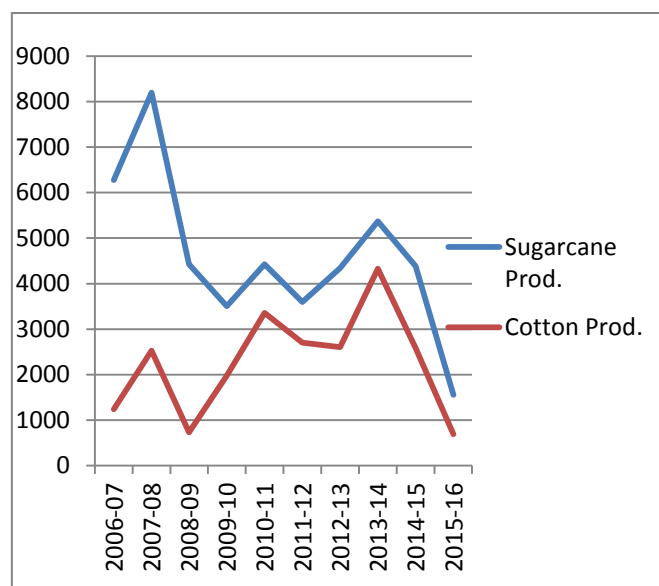
Table 1

Year	Sugarcane		Cotton	
	A	P	A	P
2006-07	97	6277	835	1240
2007-08	128	8201	1151	2523
2008-09	79	4428	1107	731
2009-10	46	3504	1293	1977
2010-11	53	4426	1331	3359
2011-12	52	3596	1562	2701
2012-13	53	4341	1605	2602
2013-14	65	5369	1732	4327
2014-15	70	4384	2099	2582

15				
2015-16	19	1558	1885	686
Avg	66.2	4608.4	1460	2272.8

Studies of the sugarcane cultivation area and production have shown that in 2006-07, the production and cultivation area of sugarcane was highest in the last ten years. The lowest cultivation area and production of sugarcane was in 2015-16. Sugarcane average cultivation area and production of last ten years was 66.2 hectare and 4608.4 million tones respectively.

Considering the cultivation area and production of cotton, there is not much change except for a couple of years. Cotton cultivation areas in 2014-15 were highest in the last ten years and the highest production occur in 2010-11. The lowest cotton planting area was in 2006-07 and the lowest production was on the 2015-16 of the last ten years. The average planting area of last ten years was 1460 hectares and the average production was 2272.8 million tones.



Ghrap 1

II. CONCLUSIONS

From the present study fluctuations are observed in the area under cultivation and production of cash crop sugarcane and cotton crop from the year 2006-07 to 2015-16. But according to time not increase production due to several problems like as low rainfall, irrigation, shortage of good quality seeds, wrong agriculture methods etc. After solving these problems production will be definitely increase.

III. REFERENCES

- [1] Amarnath Tripathi, A.R. Prasad 2009 . Agricultural Development in India since Independence: A Study on Progress, Performance, and Determinants.
- [2] D.R.Khullar 2012.INDIA:A Comprehensive Geography
- [3] D.S.Suryawanshi 2008 . Spatial pattern and level of agricultural development in the Nasik district, Maharashtra.
- [4] Najan,Raghunath Eknath 2016.Changes in cropping pattern in south east part of Ahmednagar district from the period 1970 2010.
- [5] Dr. Sanjeeva Ryudu, T. C., Dr. krishnaiah Y. V. 2011. Impact of irrigation of agricultural production in India.
- [6] Sharmishtha Balwan (COG14/1841) Abhijit Kurve (COG14/1846) .Agriculture: A case of Maharashtra & Discussion on Farmer Suicides.
- [7] Prof. S.D.Pagar, Prof. N.B.Borse, Dr.
- [8] Suman Kumar Kundu 2012. Spatio-temporal dynamics of vegetable crop production in India.